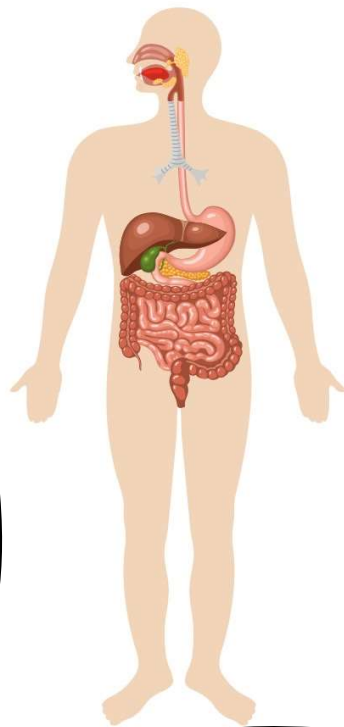




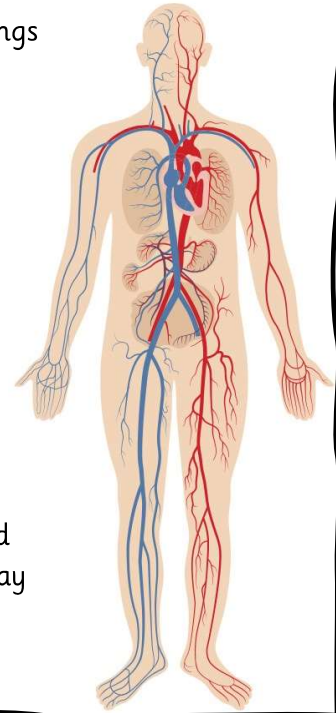
**Digestive System**



mouth  
|  
teeth  
|  
tongue  
|  
oesophagus  
|  
stomach  
breaks down  
nutrients and water  
|  
small intestine  
absorbs nutrients  
|  
large intestine  
absorbs water  
|  
rectum

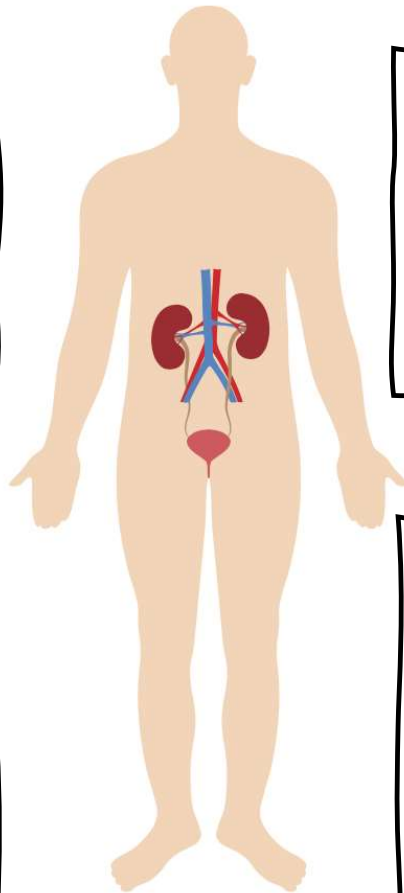
**Circulatory System**

oxygenated blood from lungs  
|  
heart pumps blood  
via arteries  
|  
transport nutrients  
|  
transport oxygen  
|  
veins and capillaries  
deliver nutrients  
and oxygen  
to muscles and cells  
|  
deoxygenated blood and  
waste products taken away  
|  
filtered and expelled  
from the body



**kidneys**


located either side of the vertebrae  
|  
right kidney  
(as you look from your eyes)  
slightly lower due to the position  
of the liver  
|  
blood enters the kidneys  
|  
filter out waste substances the  
body does not need  
|  
kidneys clean the blood  
|  
waste materials must be dissolved  
in liquid – water  
|  
that's why urine is liquid  
|  
two kidneys clean about 180 litres  
of blood in 24 hours!



**kidneys are sophisticated**

adjust the amount of water  
they excrete  
|  
on hot days we lose water  
through sweat  
|  
urinate less as the body needs to  
conserve water to avoid  
dehydration

**bladder**

muscular sac that receives  
urine from the kidneys  
|  
  
|  
stores urine before excretion  
|  
contracts to expel urine