



germination – when a seed starts to grow



leaf

makes food for the plant
like a sugar factory



stem

support leaves

transports water and nutrients from roots

sends food down to the roots and rest of plant

like a motorway

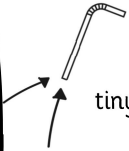


root

pull water up

tiny hairs absorb water

roots anchor plant to the ground



All parts of a plant

have specific jobs

connected to each other

essential for survival

photosynthesis

process of making food (inside the sugar factory)



chlorophyll in the leaf absorbs light to help make food

sunlight + water + carbon dioxide



makes sugar (glucose) + oxygen

transpiration

process of water moving upwards from roots

up the stem



to the leaves and out into the air

like a tanker driving up the motorway (stem)



soil

roots draw **water** and **nutrients** from soil

plants **do NOT** eat soil



helps plant **anchor** to the ground

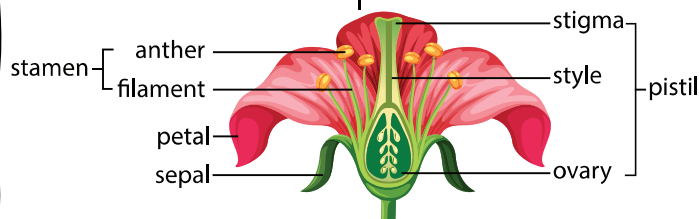


flower

purpose is to **attract insects**

cause **pollination**

to make **seeds**



pollination

The **transfer** of **pollen** to create **seeds** so a plant can **reproduce**.

