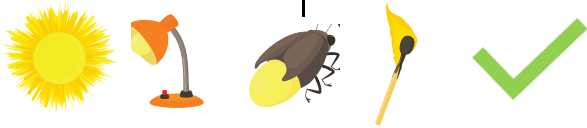
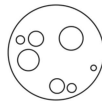




These **ARE** sources of light



**NOT** sources of light



The Moon and shiny tin foil



To see we **must have light.**

light **reflects** off an object  
enters our eyes



no light = **no sight**

object can't be seen without light

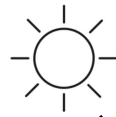


darkness is the absence of light

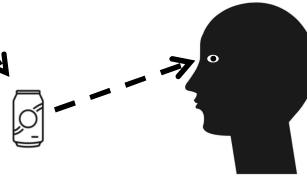
Light

light **reflects** off a surface

light enters our eyes



We see an object **because** light has reflected off it.



Light does **NOT** come from our eyes.

We use arrows to show the direction light travels from the source. - - - - ->



**NEVER** look directly at the sun or at bright light sources such as torches.

damage your eyes

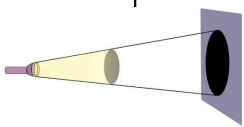


You can **protect** your eyes



**shadows** form

**opaque** object blocks the light



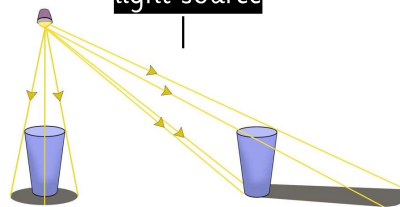
**opaque** objects let **NO** light through and cast shadows

**translucent** - lets some light through

**transparent** - lets all light through

shadows change length

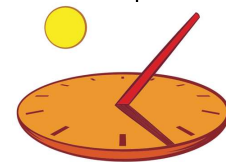
depending on the position of the **light source**



source directly **above** = short shadow

source **further away** = longer shadow

**shadows change length** as the Earth rotates



**sun dials** cast shadows

tell the time during the day